

GeoDesy FSO



## FREE SPACE OPTICS LASER SYSTEM

Geodesy FSO system for building to building laser links from 100Mtrs to 5000Mtrs 202-203

ZCOMAX

TRANZEO  
WIRELESS TECHNOLOGIES INC.



## IEEE802.11A/N WIRELESS LAN

Building to building RF system 204

psiber



## WI-FI PLANNER

Plan wireless networks with optimum site coverage 205

Wireless  
LAN



Ask about our FREE FSO training course

## What is FSO?

*FSO stands for the expression: Free Space Optics. Free Space Optics frequently referred to as Laser Wireless and generally used for establishing a data bridge between two remote networks, such as LAN, Telephone or other networks.*

*Laser Wireless Transmission carries data using a well controlled concentrated laser beam with a high bandwidth – and up to ONE gigabit speed.*

*So should you need fast, reliable and secured wireless connection with high bandwidth, you have found the perfect solution.*

### Why people choose laser wireless?

- Wireless data communication
- Licence free operation
- Cost effectivity
- No interference
- Secure Data transmission
- Excellent price & performance
- Wirespeed
- Quick deployment

Geodesy systems offer full bandwidth and secure building to building laser links. High security and bandwidth makes these ideal for data and VoIP applications. Each kit comprises of two heads, High power PoE injectors, wall mount brackets and fixings.

## Auto Focus Systems 100Mbps and 1000Mbps



### AutoFocus System

The New GeoDesy AF systems provide an increased reliability through an advanced technology improvement, which dynamically changes the shape to the transmitting laser beam. If the weather conditions deteriorate the transmitting beam size will decrease to concentrate the optical power between the heads.

This way the AF system will keep the beam size and signal quality optimized for the link resulting in optimal data rates.

#### Features Include

- AutoFocus System
- Web SNMP Management
- PoE Injectors included
- Wall Mount Brackets
- Local & Remote Signal strength



Ask about our FREE FSO training course

|                                      |                             |
|--------------------------------------|-----------------------------|
| Pico AutoFocus<br>100-500Mtr 100Mbps | <b>PX-P0500E/AF/TP</b>      |
| Pico Auto Focus<br>500m-1Km 100Mbps  | <b>PX-P1000E100/AF/TP</b>   |
| GigaPico AutoFocus<br>100-500Mtr     | <b>PX-P0500E10000/AF/TP</b> |
| Head heater option                   | <b>GD-HEAT</b>              |

## GeoDesy Warranties

Standard warranty is 1 Year Advanced Replacement Additional warranty options can be purchased to give cover for up to 4 Years.

**WARRANTY**

**EXTENDED WARRANTY**

1 Year Advanced Replacement (Use in Year 2 only)

**WAD-REP**

1 Year Return to Base repair warranty (can be used in year 2-3-4 )

**WAD**

Each extended warranty is based on a per year basis and must be purchased within 12 months of hardware purchase. Multiyear warranties must also be ordered within 12 months of the hardware purchase.

[www.geodesy.hu/fso\\_en](http://www.geodesy.hu/fso_en)



## Manual Beam Focus (MBF) System

The GeoDesy Manual Beam Focus (MBF) system has been added to certain models to allow the beams to be manually adjusted to give optimum beam size for increased link stability and reliability. This adjustment allows you to change the shape of the beams to match the link distance allowing a larger distance range on certain models. The adjustment is done via a rear mounted screw.

## 100Mbps Laser Links 10Mtrs to 5000Mtrs

The Pico through to the GD range all feature SNMP web management and are supplied with wall mount brackets PoE injectors and 100BaseT copper interfaces. The Pluto 100Mtr unit does not include the Web based SNMP interface.



|                        |                       |
|------------------------|-----------------------|
| Pluto 10-100Mtrs*      | <b>PX-P0100E100TP</b> |
| Pico 100-200Mtr        | <b>PX-P0200E100TP</b> |
| Pico 200-350Mtr        | <b>PX-P0350E100TP</b> |
| Pinto 350-650Mtr MBF** | <b>PX-P0650E100TP</b> |
| Pronto 650mts -1Km     | <b>PX-P1000E100TP</b> |
| Pronto 1KM-1.4Km       | <b>PX-P1400E100TP</b> |
| Pronto 1.4-1.8Km       | <b>PX-P1800E100TP</b> |
| GD 4-5KM               | <b>GD5000E100TP</b>   |
| Heater Option          | <b>GD-HEAT</b>        |

\* No SNMP web management

\*\* MBF Manual Beam Focus allows the beams to be optimized to the link distance.

See above for an explanation of the MBF system.

## Gigabit 1000Mbps Laser Links 40Mtrs to 1800Mtrs

All units feature web management and are supplied with wall mount brackets and PoE injectors. 1000BaseT copper interfaces. Other interfaces are available.

The new GigaPico uses the manual beam focus system and can be optimised for used between 40-400Mtrs. Fibre interfaces are also available. Call sales office for details



### Features include

- 1.25Gbps Bandwidth
- PoE Injectors included

|                           |                      |
|---------------------------|----------------------|
| Giga Pico 40-400mtr MBF** | <b>PX-P0400E1000</b> |
| GigaPinto 500-650mtrs     | <b>PX-P0650E1000</b> |
| GigaPronto 650mtrs -1Km   | <b>PX-P1000E1000</b> |
| GigaPronto 1-1.4Km        | <b>PX-P1400E1000</b> |
| GigaPronto 1.4-1.8Km      | <b>PX-P1800E1000</b> |
| Heater Option             | <b>GD-HEAT</b>       |

\*\*MBF Manual Beam Focus allows the beams to be optimized to the link distance

All units feature web management and are supplied with wall mount brackets and PoE injectors.

Wireless  
LAN

## IP68 Rated Weatherproof Long Range Transmission

**4ipnet**



200mW Wi-Fi 802.11n/a device for long range wireless transmission. Its rugged IP68-rated metal housing is weatherproof, watertight and rust-resistant, making it an ideal solution for deployments in harsh conditions, such as outdoor or industrial environments. Supports multiple operation modes (AP/Bridge/CPE) and works well as a last-mile solution for wireless ISPs (WISPs). Built in 14dBi Antenna.

802.11n MiMo Access Point

**OWL410**

## Carrier Grade 802.11a 54Mbps Solution

**TRANZEO**  
WIRELESS TECHNOLOGIES INC.



The Tranzeo external mount TR range is a carrier grade WLAN solution. The combined AP/client unit with built in antenna makes deployment quick and easy. Full web management. Operating in the 802.11a band makes these ideal for building to building links. Supplied with PtE injector and PSU.

TR5 20dBi Antenna

**TR-5A-20**

TR5 24dBi Antenna

**TR-5A-24**

## Skyport Web Managed 802.11a 300Mbps

**ZCOMAX**



The Skyport A is a compact web managed AP/Client unit with built in antenna. Can be used in a variety of applications including building to building links. N series interface for external antenna if required. Supplied with PtE injector and PSU.

Skyport A AP/CPE

**ZCN-1523H-5-16**

## Skyport Web Managed 802.11n 300Mbps

**ZCOMAX**



The Skyport N is a compact web managed AP/Client unit with built in antennas. Can be used in a variety of applications including building to building links. Supplied with PtE injector and PSU.

Skyport N AP/CPE

**ZCN-1523H2-8**

Wireless  
LAN

## Psiber Data WiFi Planner

The **Psiber Data RD3D WifiPlanner 2** allows you to plan wireless networks on your screen, with optimum site coverage. Plan for the specific characteristics of your site on actual building plans with exact network components (access points, antennas, etc.) that you will actually need. WifiPlanner pays for itself as soon as you save just one access point.

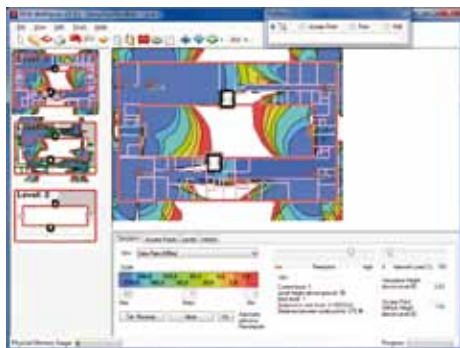
**RF3D WifiPlanner 2** is the economical, user friendly software for manufacturer-independent WLAN panning in three dimensions. The program includes an extensive database of wall and ceiling materials, antennas and access points.

**Features:**

- WLAN panning for 802.11 a,b,g,h and n
- Optimized 3D engine for real time simulation of WLAN characteristics in buildings
- Library of wall, antenna and access point types
- Comprehensive display of WLAN coverage
- Meaningful reports, usable for cost estimates
- More efficient WLAN networks thanks to professional planning

**WifiPlanner 2 PRO** includes a report generator and is the optimum WLAN planning tool for professional WLAN planners and installers who want to carry out large scale projects. Unlimited number of access points and floors and a reliability simulator.

**WifiPlanner 2 LITE** is a cost effective WLAN planning tool which is limited to projects with upto 10 access points in buildings of up to five stories. No report generator is included. The LITE version can be upgraded to the Pro version using the PS-RF3DUP2 upgrade.



|                          |                   |
|--------------------------|-------------------|
| RF3D WifiPlanner 2 Lite  | <b>PS-RF3DLT2</b> |
| RF3D WifiPlanner 2 Pro   | <b>PS-RF3DPR2</b> |
| RF3D Lite to Pro Upgrade | <b>PS-RF3DUP2</b> |

Wireless  
LAN

Want to know more about  
Geodesy Free Space Optics?  
Ask about our training courses.



Test Equipment:  
pages 252-263

For all the latest product information see [www.minitran.co.uk](http://www.minitran.co.uk).

**Minitran** Structured Cabling | Networking  
Audio Visual | Home Automation | Security

Need Help? We'll call you. Search

Home About Us Catalogue Glossary Location Contact Clearance Open an Account Cabling Partner Farms Newsletter Links

**ARCHOS** Entertainment your way **Win an Archos 101 Internet Tablet PC in our Prize Draw** [Click Here](#)

**Basket: 0 item(s)**  
Total: £0.00 + VAT  
[Checkout](#) [Empty Basket](#)  
[Submit for Quote](#)  
If you have an internet you can watch your basket for 4 weeks

**FREE** standard next day delivery for orders over £150

**Product Categories**

- Structured Cabling Systems & Accessories
- Home Cabling & Home Automation
- Audio Visual
- Fibre Optic
- Voice Products
- Cable Tray, Trunking, Conduit & Cable Protection
- Ethernet Switches, Converters & KVM
- Wireless LAN

**INTRODUCING Surveon**

A brand new range of megapixel IP PoE video cameras, software and NVRs - offering you an end to end solution supported by a 3 year warranty!

Included are Bullet, Dome, Pan & Tilt Cameras and Network Video Recorders (NVRs)

ALL SUPPLIED WITH FEATURE RICH SOFTWARE WHICH AUTO CONFIGURES FOR EASY SET UP!

Features include:

- Foreign & missing object detection
- Forbidden area
- Intrusion detection
- Camera tampering detection
- ...and more!

**3 Year Warranty**

[Follow this link for the raise](#) [Follow this link to receive for FREE training](#)

Wireless LAN