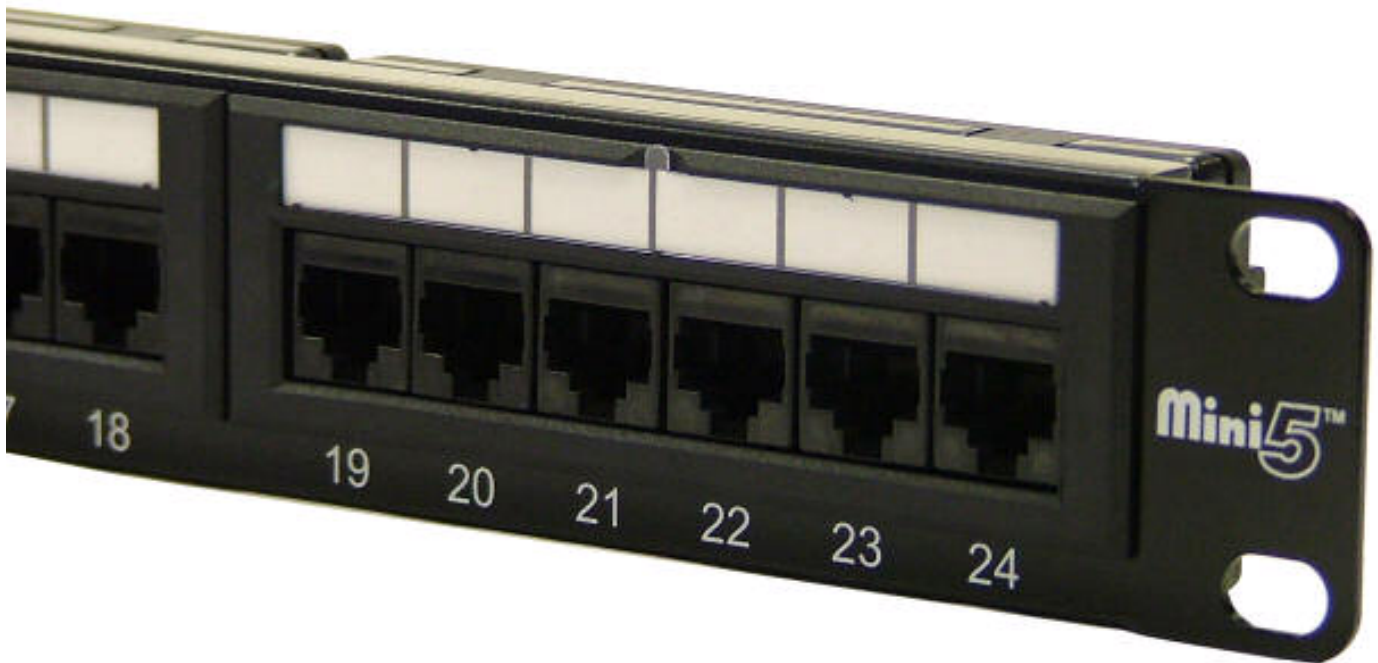


# MP24TL-KRO-CECBK **Mini5**™

## Mini5™ Cat5e Patch Panels (UTP)

Mini5™ unshielded Cat 5e patch panels utilise a Katt compatible punch down block suitable for high speed LAN transmission rates up to 1000Mbps and meet the requirement of the TIA/EIA 568B specification.

Each panel utilises printed circuit board technology to balance the transmission of return loss and cross talk from 1 to 100MHz for each possible pair combination.



### Key Features

- Snap-in six position modules (Supplied Fitted)
- Dual compatible punchdown blocks
- Cable tie slots for cable management
- Numbered ports
- Perspex covered slide in label field
- Cage nuts included

Description	Part No
24 Port 1U	MP24TL-KRO-CECBK
48 Port 2U	MP48TL-KRO-CECBK